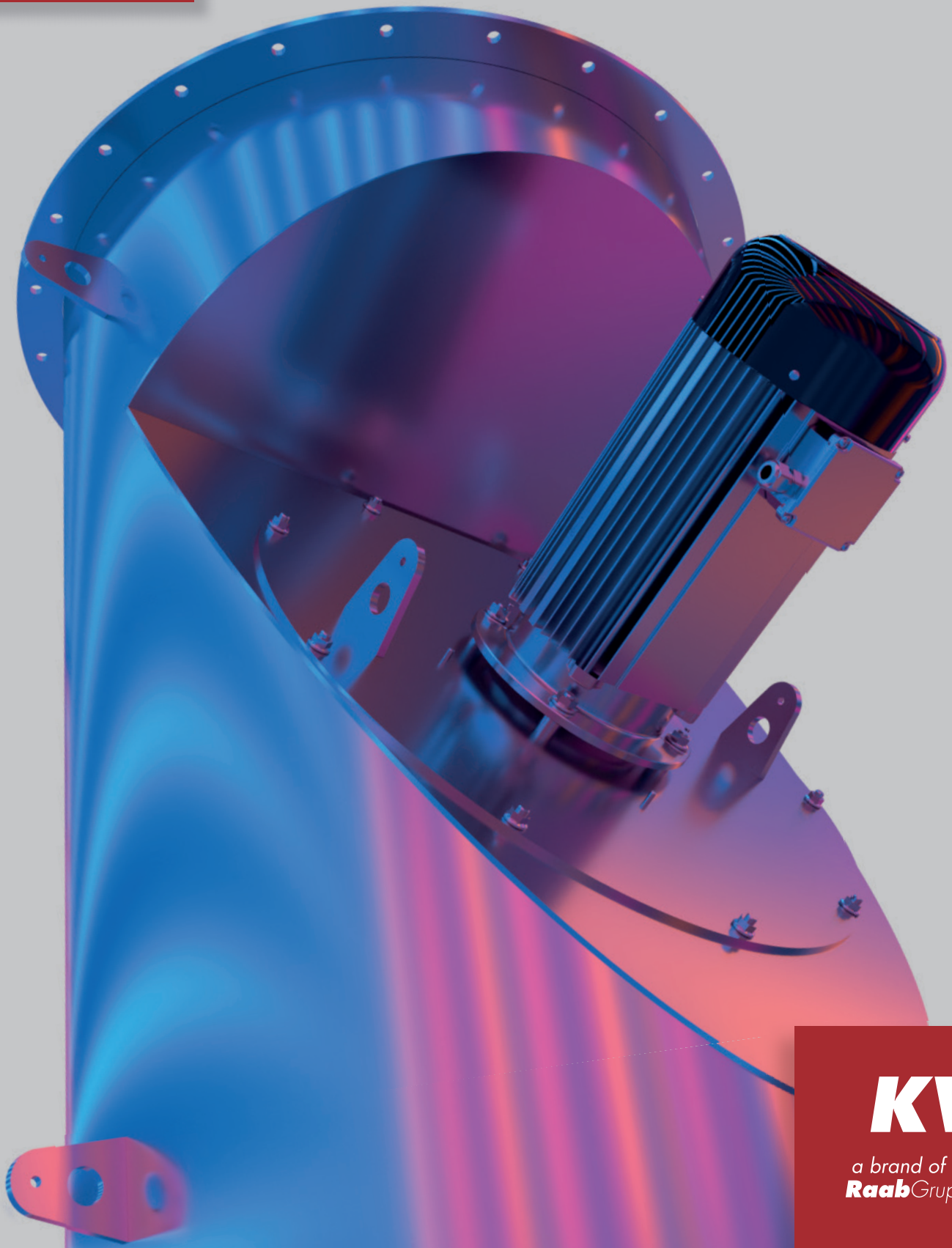


# LINEJEKT®

Industrial fan for efficient production processes

PRODUCT SHEET



**KW**  
a brand of the  
**Raab** Gruppe 

# LINEJEKT®

Efficient production processes require a chimney draught that is constant or adapted to the respective production process at all times of the year, whether for the discharge of flue gases or the extraction of process air.

Due to changing weather conditions or also modulating and variable processes in production, conventional flue gas pipes or exhaust air shafts without further exhaust components are unsuitable for this.

With the help of industrial fans and associated control systems, a constant exhaust air volume can be generated that is adapted to the respective situation. This ensures consistent process quality. The Linejekt industrial fan was developed specifically for these requirements.

## MODELS AND MODE OF OPERATION

The Linejekt industrial fan is suitable for all types of industrial plants. It is offered in various sizes from DN 250 to DN 800. Depending on the size, it has a delivery volume of 800 to 17,400 m<sup>3</sup>/h and can generate negative pressures of up to 1,400 Pa. Gaseous media up to 400 °C can be conveyed.

The linejekt is continuously adjustable by means of a frequency converter or phase angle control (depending on the motor type) and can thus be adapted to any process. We offer special controls for self-sufficient applications.

All models can also be easily integrated into on-site MSR systems. They can be used both indoors and outdoors, in which case the IP54 protection class must be observed; a weather protection roof for outdoor installation is available as an accessory.

## INSTALLATION

The installation is carried out with the installation accessories matched to the unit and can be carried out in a horizontal or vertical position.

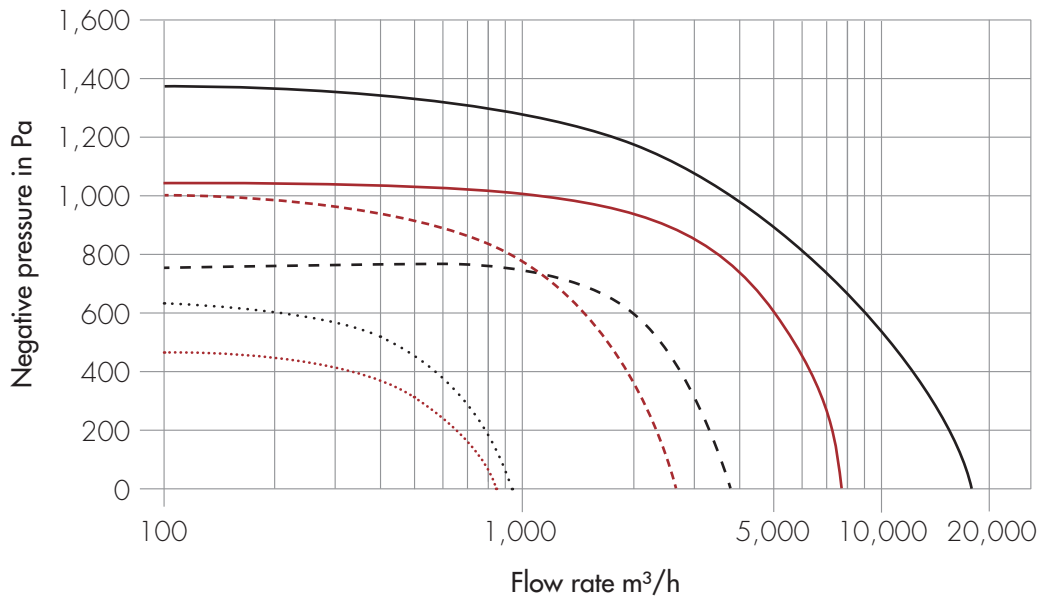
For larger delivery volumes or redundant operation, several Linejekts can also be mounted in parallel in the system. The units are matched to the flue gas systems and can be mounted in the system by means of flange connections. Appropriate transitions for various duct and chimney systems can be manufactured on request.



## ADVANTAGES

- ✓ Consistent process quality during production
- ✓ Independence from natural draught in the chimney or duct system
- ✓ Low energy costs
- ✓ Ideal for conveying gaseous media
- ✓ Extensive range of accessories
- ✓ Indoor and outdoor installation possible
- ✓ Low installation costs due to simple installation in the system via flange connection
- ✓ Installation in all chimney and duct systems due to factory-made transitions
- ✓ Subsequent installation possible at any time
- ✓ Variable adjustment of the output to the process and production requirements
- ✓ Low maintenance costs due to low-maintenance components and maintenance-friendly design
- ✓ Robust stainless steel construction
- ✓ Easy to integrate into on-site MSR systems
- ✓ Pre-programmed frequency converters
- ✓ Larger conveying volumes or redundant operation possible through parallel installation
- ✓ Use of existing control systems
- ✓ Plug and play on all Raab flange systems
- ✓ Adapters to other chimney brands on request

# PERFORMANCE DIAGRAM



- Linejekt 800 55 Hz
- Linejekt 600 60 Hz
- - - Linejekt 450 65 Hz
- - - Linejekt 350 100 Hz
- • • Linejekt 250 60 Hz
- • • Linejekt 250 50 Hz

## ACCESSORIES



Transition flange to Raab Alkon or EW-FU



Set for wall or ceiling mounting



Weather protection cover



Speed controller (for Linejekt 250 230 V)



Maintenance switch



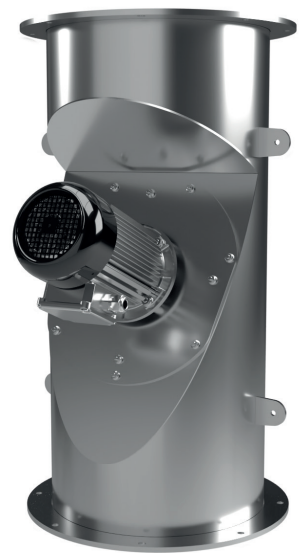
Control CFC 10



Frequency converter + remote control

# TECHNICAL DATA

- ✓ Material stainless steel
- ✓ Size DN 250 to 800
- ✓ Delivery volume 800 to 17,400 m<sup>3</sup>/h
- ✓ Negative pressures up to 1,400 Pa
- ✓ Flue gas temperature resistant up to 400 °C



Linejekt® – powerful and universal industrial fan

Designation	Item no.	DN [mm]	Voltage [V]	Current [A]	Power consumption [kW]	Frequency [Hz]	max. flow rate [m <sup>3</sup> /h]	max. negative pressure [Pa]	Dimensions b x h [mm]	Dimensions x; y [mm]	Weight [kg]
Linejekt 250	2113772	250	230	1.15	0.25	50	833	475	357 x 590	320; 318	13.2
Linejekt 250	2113773	250	400	0.6	0.35	60	922	650	357 x 590	320; 318	13.2
Linejekt 350	2113774	350	400	2.1	0.96	100	2,636	1,010	478 x 775	495; 418	27.2
Linejekt 450	2111602	450	400	2.2	0.95	65	3,753	750	547 x 908	600; 602	46.2
Linejekt 600	2111610	600	400	5.9	2.90	60	7,623	1,050	781 x 1.108	800; 752.5	103
Linejekt 800	2110792	800	400	14.7	7.74	55	17,471	1,400	1,039 x 1,250	950; 947	198

Linejekt 250, 350, 450, 600 + 800 with flange

