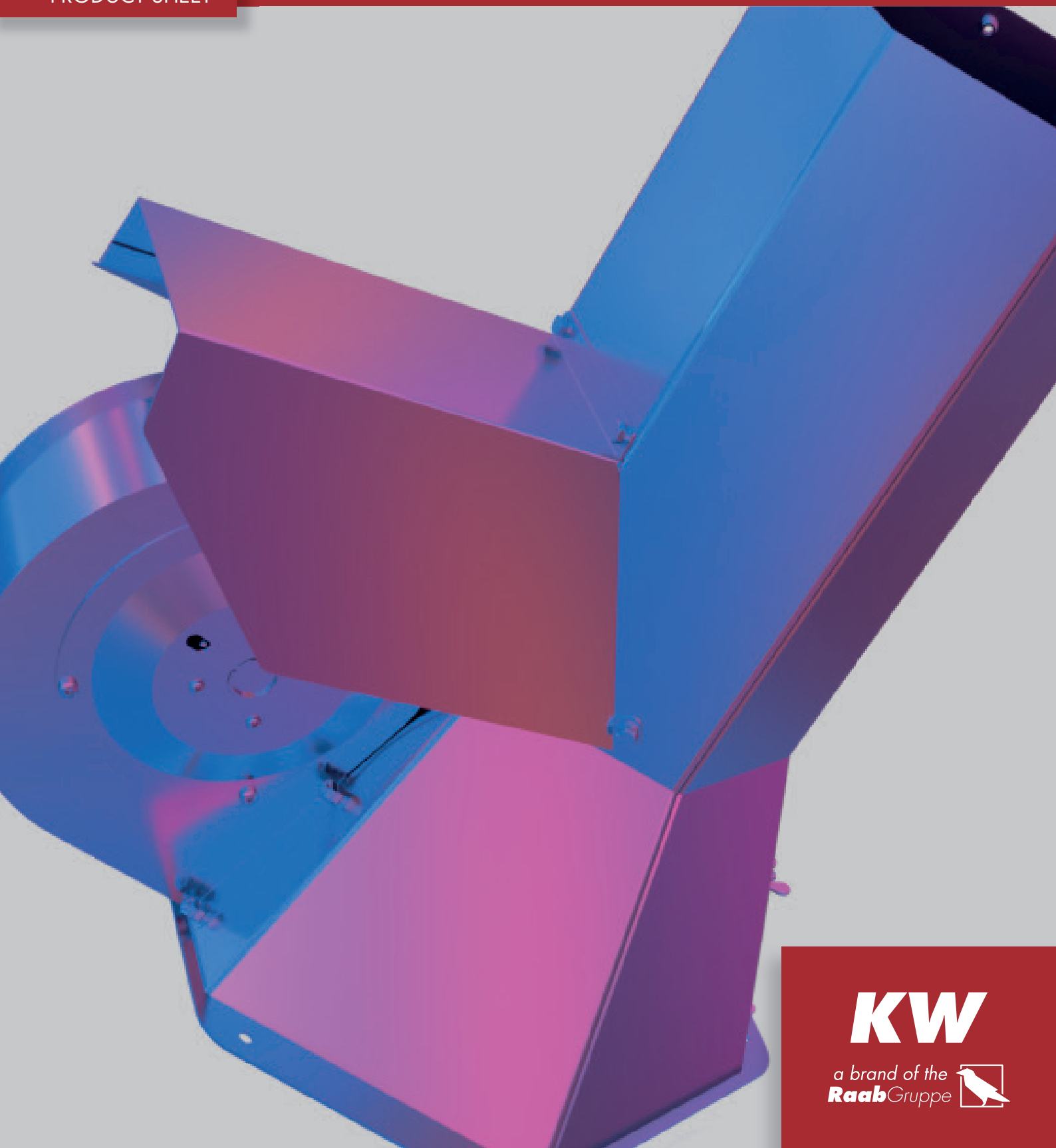


# INJEKT®

For a powerful draught in the chimney

PRODUCT SHEET

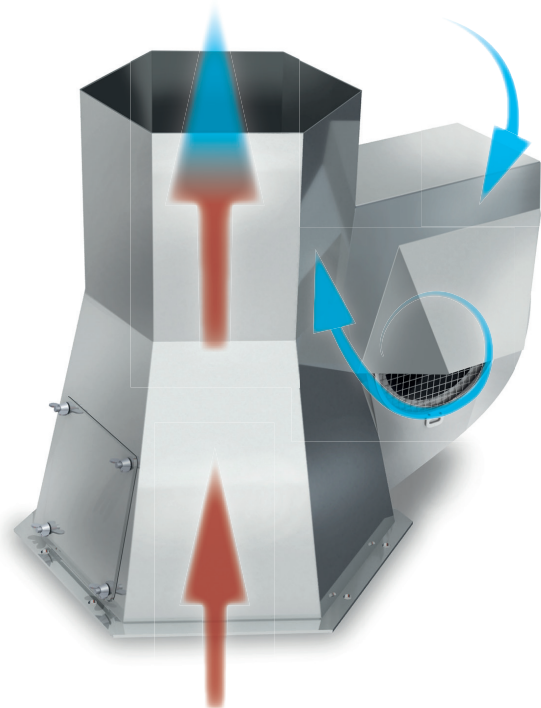


**KW**  
a brand of the  
**Raab** Gruppe 

# THE INJEKT®

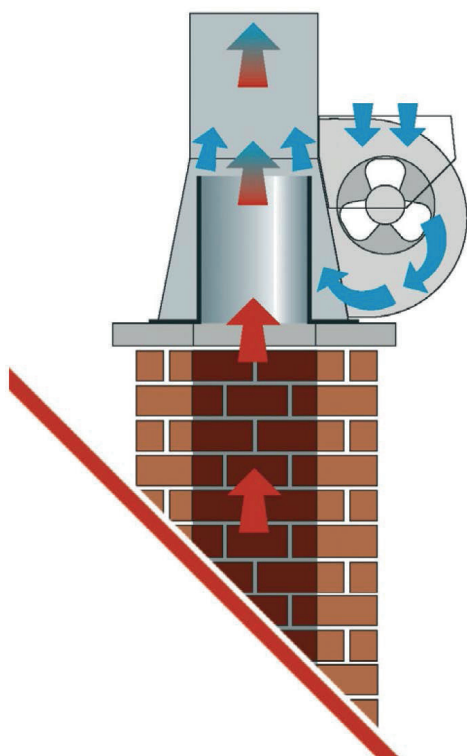
Unfavourable weather conditions, an unfavourable positioning of the chimney, a cold flue gas system when heating up or an incorrect design of the flue gas system can cause draught problems in the chimney. In this case, the flue gases are not reliably removed and affect the operational safety of the flue gas system and the fireplace.

If the natural draught is too weak, the Injekt chimney fan ensures reliable and optimum draught in the chimney again. Flue gas systems and chimneys must be designed in such a way that the negative pressure required for safe flue gas routing is always present. This makes the Injekt a safety-relevant component that enables safe acceptance by the chimney sweeper in the event of draught problems.



## OPERATING PRINCIPLE

The Injekt chimney fan is mounted on the chimney mouth and creates a safe draught in the chimney with its electric fan. A special feature of the Injekt is its external technology. The Injekt utilises the laws of fluid mechanics to arrange all mechanical and electrical components outside the chimney cross-section. There are therefore no cross-section-constricting installations in the flue gas path of the Injekt.



Universal attachment to the brick chimney head using the square screw plate.

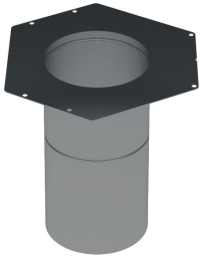
## BENEFITS

- ✓ The chimney cross-section always remains freely accessible for the chimney sweeper.
- ✓ The fan and the electrical components are not touched by the aggressive and hot exhaust gases. The chimney fan is therefore low-maintenance.
- ✓ The free cross-section of the chimney is always maintained – even in the event of a power failure.
- ✓ If the injector is not required when there is sufficient natural chimney draught, it can be switched off. There is no risk of it being damaged. This also saves electrical energy.

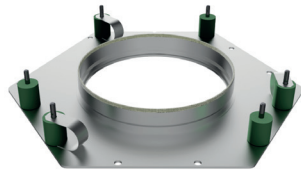


Adaptation to all standard stainless steel systems is possible using an insertion adapter.

# ZUBEHÖR



Insertion adapter



Vibration damper



Rain cap



Speed controller



Maintenance switch



Control CFC 10



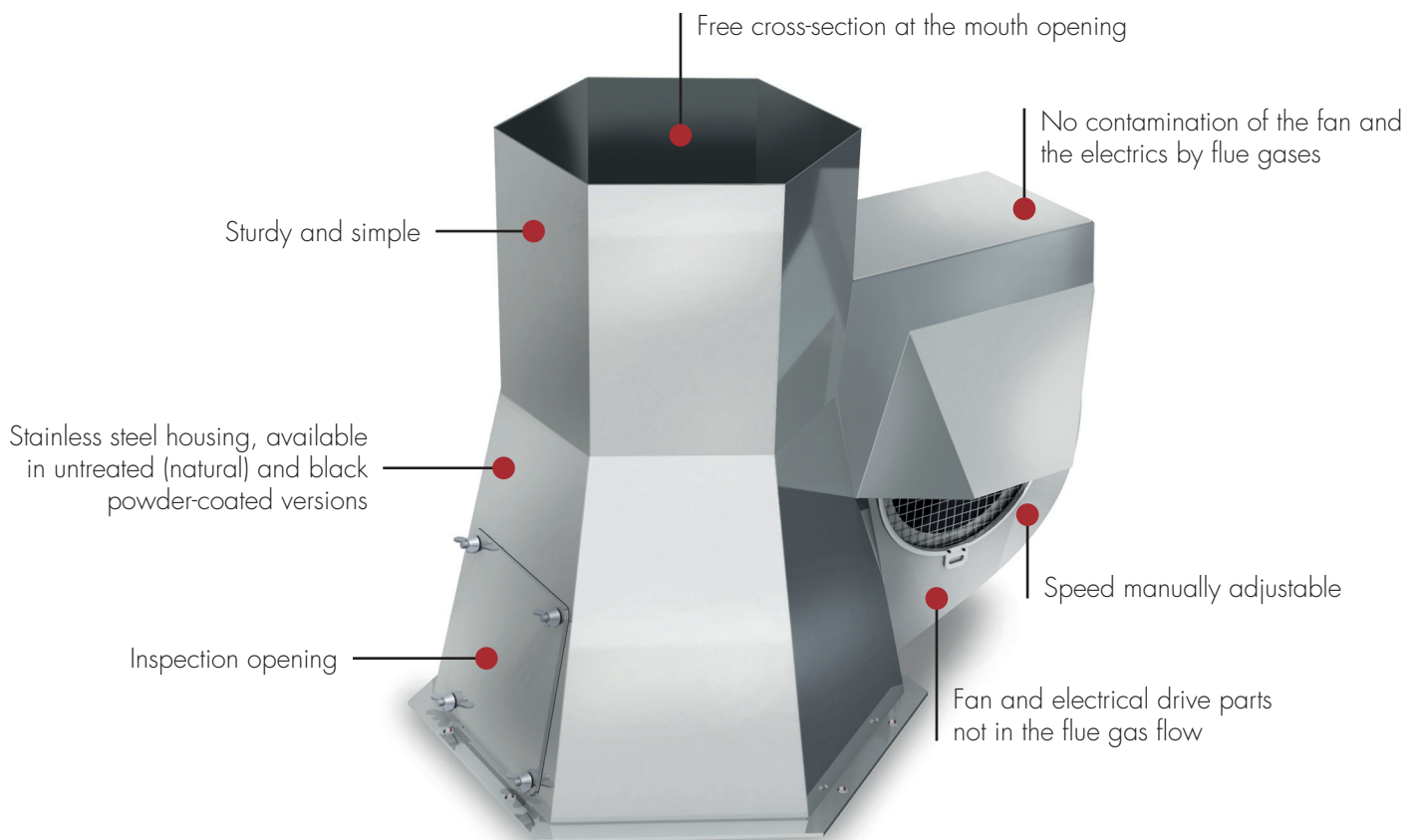
Extension box CE 20



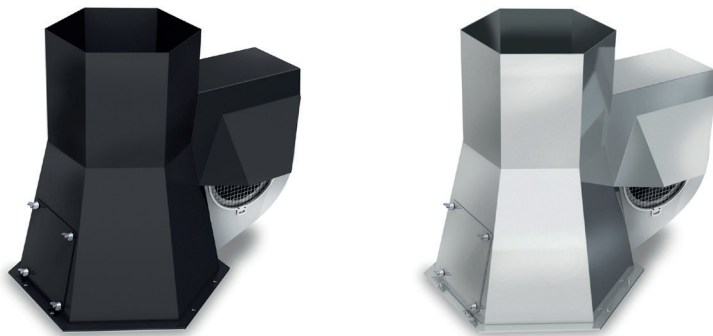
Step controller



Pressure control CFC 5



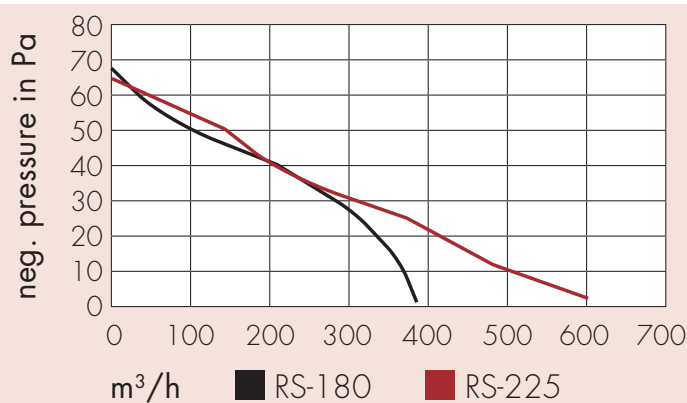
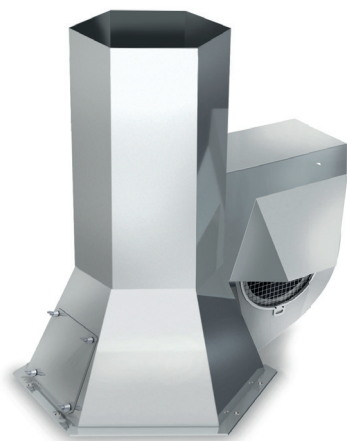
# TECHNICAL DATA



- ✓ Solves draught problems in flue gas systems
- ✓ Ensures safe draught in difficult weather conditions
- ✓ Ensures the function of unfavourably designed flue gas systems
- ✓ Increases operational safety
- ✓ Optimises combustion in the fireplace
- ✓ Can be used as a heating aid
- ✓ Can be switched off by a timed actuator

## Injekt® 180

| Designation | Item No. | Nominal width [mm] | Power [W] | Neg. pressure [Pa] | Flow rate [m³/h] | Overall height [mm] | Weight [kg] |
|-------------|----------|--------------------|-----------|--------------------|------------------|---------------------|-------------|
| RS-180      | 2108080  | 100–200            | 170       | 68                 | 383              | 400                 | 8           |
| RS-180 ES   | 2108081  | 100–200            | 170       | 68                 | 383              | 400                 | 8           |



## Injekt® 225

| Designation | Item No. | Nominal width [mm] | Power [W] | Neg. pressure [Pa] | Flow rate [m³/h] | Overall height [mm] | Weight [kg] |
|-------------|----------|--------------------|-----------|--------------------|------------------|---------------------|-------------|
| RS-225 ES   | 2108083  | 200–250            | 270       | 65                 | 599              | 700                 | 12          |